

**SUBJECT  
SITE**

**THE Chappell GROUP INC.**  
 714 East McNab Road  
 Pompano Beach, Florida 33060  
 tel. 954.782.1908  
 fax. 954.782.1108 [www.thechappellgroup.com](http://www.thechappellgroup.com)

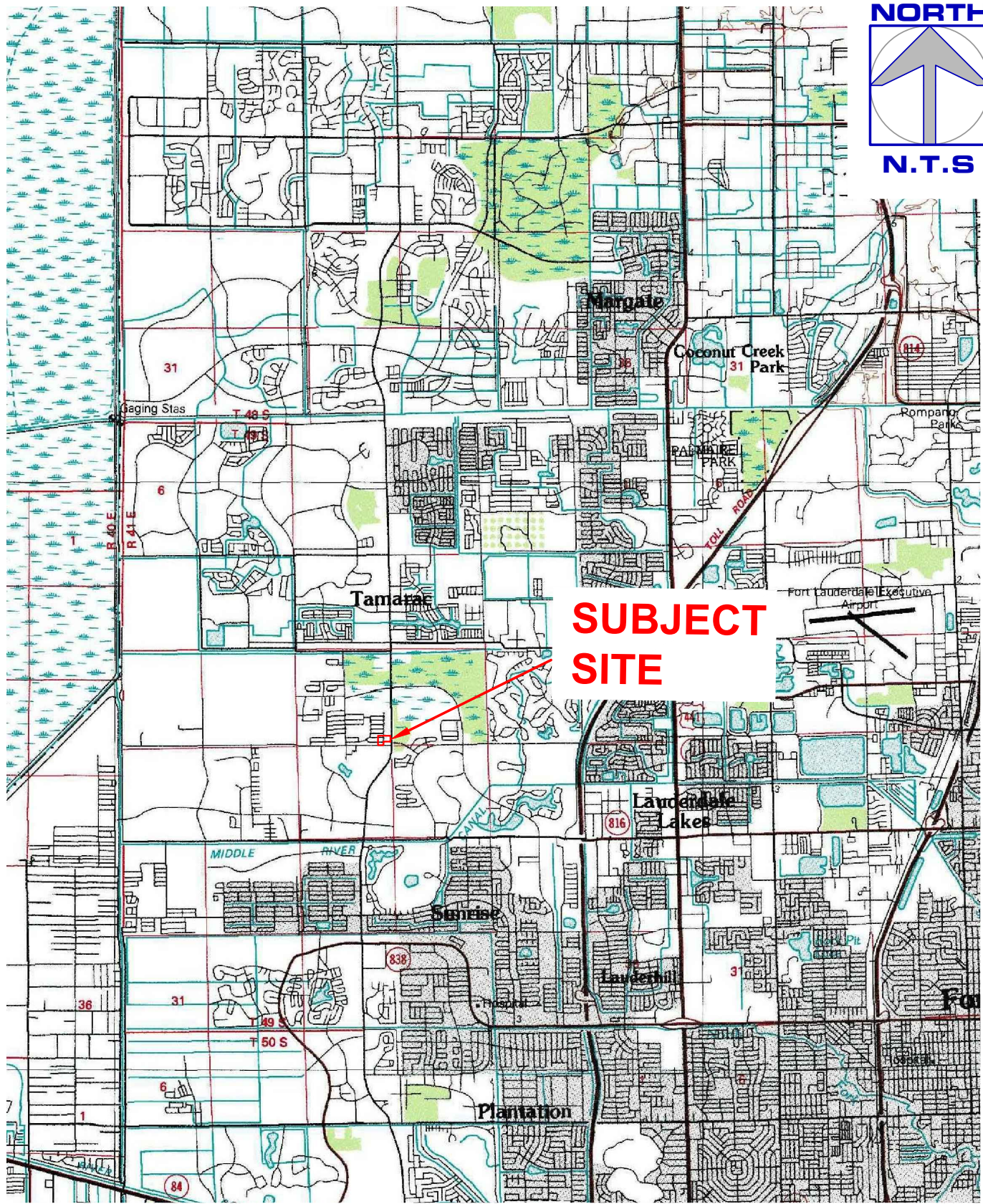
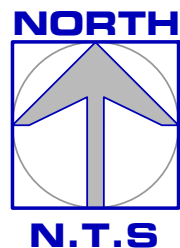
- Environmental Consultants
- Marina & Wetland Permitting
- Mitigation Design & Monitoring
- T&E Species Surveys
- Phase I ESAs

**PINE ISLAND ROAD & 50TH ATHLETIC FACILITY**

PREPARED FOR:  
**CITY OF SUNRISE**

LOCATION MAP

Date: 7-5-2016	Sheet :	of :
Proj No.: 14-0028.001	<b>1</b>	<b>1</b>



**SUBJECT SITE**

**THE Chappell GROUP INC.**  
 714 East McNab Road  
 Pompano Beach, Florida 33060  
 tel. 954.782.1908  
 fax. 954.782.1108 [www.thechappellgroup.com](http://www.thechappellgroup.com)

- Environmental Consultants
- Marina & Wetland Permitting
- Mitigation Design & Monitoring
- T&E Species Surveys
- Phase I ESAs

PINE ISLAND ROAD & 50TH ATHLETIC FACILITY

PREPARED FOR:  
 CITY OF SUNRISE

USGS QUAD MAP

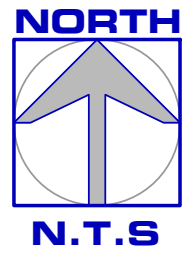
Date:  
 7-5-2016  
 Proj No.:  
 14-0028.001

Sheet :

1

of :

1



**SUBJECT SITE**



**LEGEND**

- 1210 FIXED SINGLE FAMILY UNITS
- 1330 MULTIPLE DWELLING UNITS, LOW RISE
- 1700 INSTITUTIONAL

**THE Chappell GROUP INC.**  
 714 East McNab Road  
 Pompano Beach, Florida 33060  
 tel. 954.782.1908  
 fax. 954.782.1108  
[www.thechappellgroup.com](http://www.thechappellgroup.com)

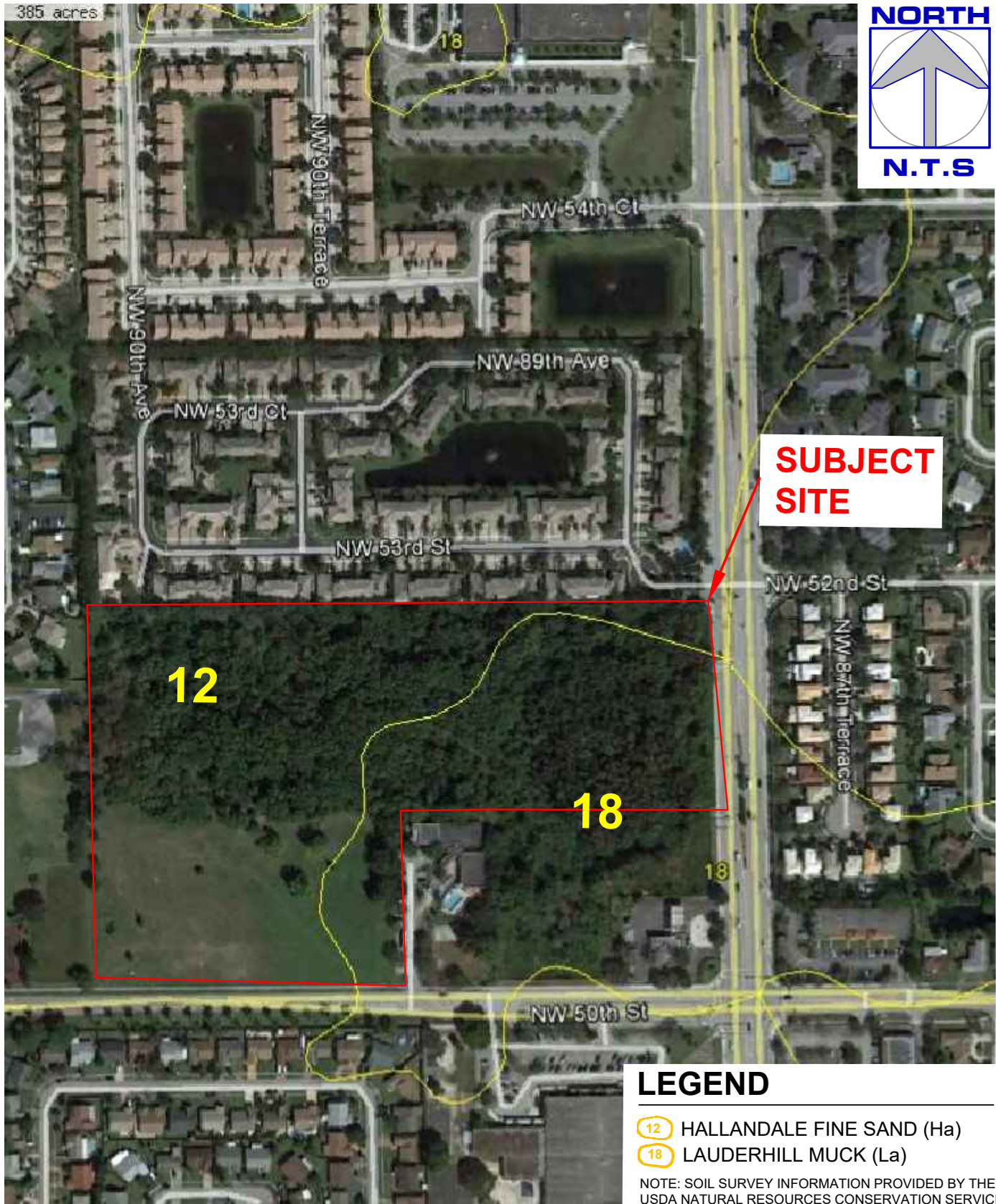
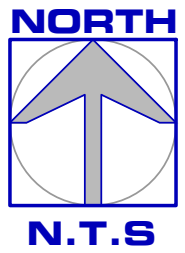
- Environmental Consultants
- Marina & Wetland Permitting
- Mitigation Design & Monitoring
- T&E Species Surveys
- Phase I ESAs

PINE ISLAND ROAD & 50TH ATHLETIC FACILITY  
 PREPARED FOR:  
 CITY OF SUNRISE

FLUCCS-PROPOSED		
Date: 7-5-2016	Sheet :	of :
Proj No.: 14-0028.001	1	1

THIS DRAWING AND ALL APPURTENANT MATTER CONTAINS INFORMATION PROPRIETARY TO THE CHAPPELL GROUP, INC. AND IS LOANED SUBJECT TO RETURN UPON DEMAND AND MUST NOT BE REPRODUCED, COPIED, LOANED, REVEALED, NOR LISTED FOR ANY PURPOSE OTHER THAN THAT FOR WHICH IT IS SPECIFICALLY FURNISHED WITHOUT EXPRESSED WRITTEN CONSENT OF THE CHAPPELL GROUP, INC. © THE CHAPPELL GROUP, INC. 2016

385 acres



**SUBJECT SITE**

### LEGEND

- 12 HALLANDALE FINE SAND (Ha)
- 18 LAUDERHILL MUCK (La)

NOTE: SOIL SURVEY INFORMATION PROVIDED BY THE USDA NATURAL RESOURCES CONSERVATION SERVICE.

**THE Chappell GROUP INC.**  
 714 East McNab Road  
 Pompano Beach, Florida 33060  
 tel. 954.782.1908  
 fax. 954.782.1108 [www.thechappellgroup.com](http://www.thechappellgroup.com)

- Environmental Consultants
- Marina & Wetland Permitting
- Mitigation Design & Monitoring
- T&E Species Surveys
- Phase I ESAs

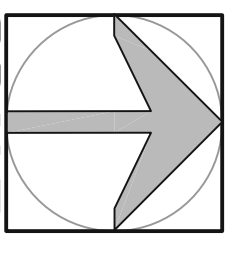
PINE ISLAND ROAD & 50TH ATHLETIC FACILITY

PREPARED FOR:  
CITY OF SUNRISE

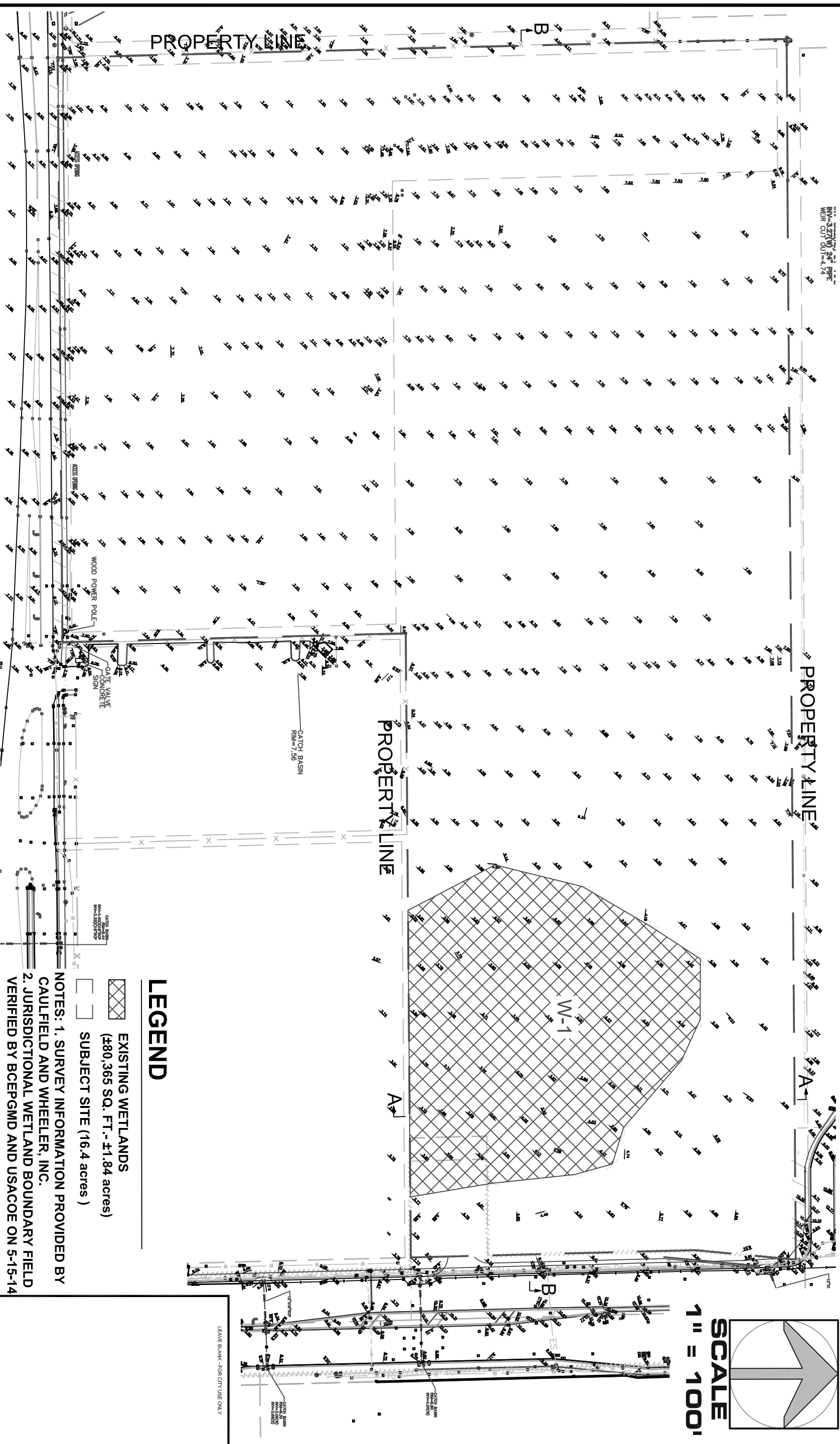
SOILS MAP

Date: 7-5-2016	Sheet : <b>1</b>	of : <b>1</b>
Proj No.: 14-0028.001		

**NORTH**



**SCALE**  
**1" = 100'**



DATE:	
SCALE:	
DESIGNED BY:	D/S
DRAWN BY:	D/S
CHECKED BY:	D/S
APPROVED BY:	J/H

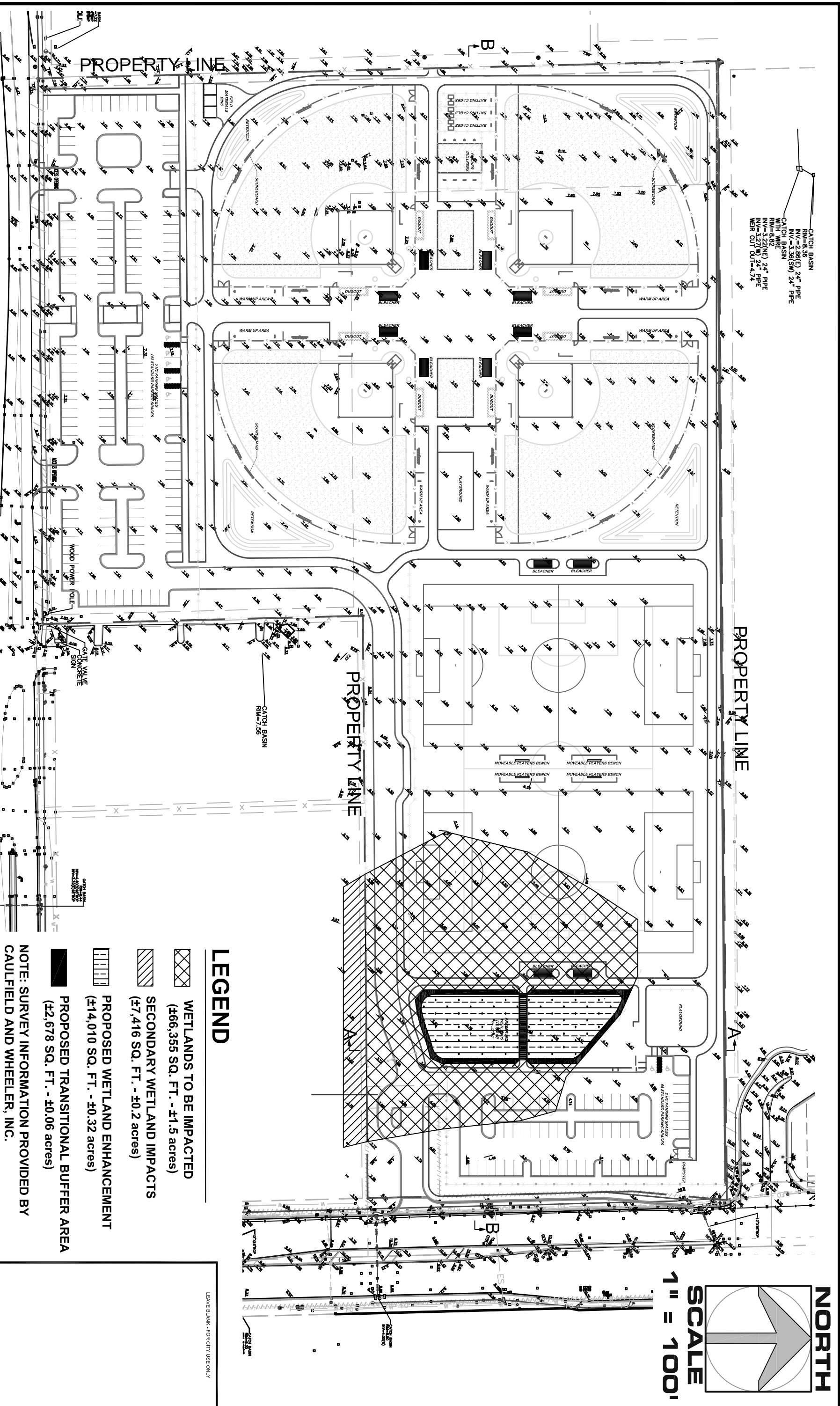
GRAVEN, THOMPSON AND ASSOCIATES, INC.  
ENGINEERS PLANNERS SURVEYORS  
3000 N.W. 40th STREET, SUITE 200  
PINE ISLAND, FLORIDA 33908  
TEL: 888-823-4293 FAX: 888-823-4294  
WWW.GRAVEN-THOMPSON-AND-ASSOCIATES.COM

**PINE ISLAND ROAD AND 50TH STREET  
ATHLETIC COMPLEX**  
PINE ISLAND ROAD  
SUNRISE, FL  
PREPARED FOR: CITY OF SUNRISE, FLORIDA

**THE Chappell GROUP**  
714 East Michalee Road  
Port Orange Beach, Florida 32080  
Tel: 352-782-1188 Fax: 352-782-1189  
www.thechappellgroup.com

- Environmental Consultants
- Marina & Wetland Permitting
- Navigation Design & Monitoring
- T&E Species Surveys
- Phase I/ESA's

SEAL	DATE
Douglas James Schultz Florida R.L. No. LX 866937	7-1-2016
PROJECT #	DRAWING NO.
15-0043	1 of 5

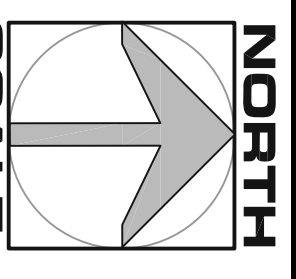


CATCH BASIN  
 RIM=8.56  
 INV.=2.86(E) 24" PIPE  
 INV.=3.36(SW) 24" PIPE  
 CATCH BASIN  
 RIM=8.02  
 INV.=3.22(NE) 24" PIPE  
 INV.=3.27(W) 24" PIPE  
 WEIR CUT OUT=4.74





PROPERTY LINE

PROPERTY LINE

PROPERTY LINE



**LEGEND**

-  **WETLANDS TO BE IMPACTED**  
 (±66,355 SQ. FT. - ±1.5 acres)
-  **SECONDARY WETLAND IMPACTS**  
 (±7,416 SQ. FT. - ±0.2 acres)
-  **PROPOSED WETLAND ENHANCEMENT**  
 (±14,010 SQ. FT. - ±0.32 acres)
-  **PROPOSED TRANSITIONAL BUFFER AREA**  
 (±2,678 SQ. FT. - ±0.06 acres)

NOTE: SURVEY INFORMATION PROVIDED BY CAULFIELD AND WHEELER, INC.

LEAVE BLANK - FOR CITY USE ONLY

DATE:	
SCALE:	
DESIGNED BY:	DJS
DRAWN BY:	DJS
CHECKED BY:	DJS
APPROVED BY:	JDH
DESCRIPTION:	
BY:	
DATE:	

**GRAVEN, THOMPSON AND ASSOCIATES, INC.**  
 ENGINEERS • PLANNERS • SURVEYORS

3005 N.W. 50TH STREET, FORT LAUDERDALE, FLORIDA 33309  
 PHONE: 352-345-0000 FAX: 352-345-0001  
 10000 W. UNIVERSITY BLVD., SUITE 200, SUNRISE, FL 33157  
 PHONE: 352-345-0000 FAX: 352-345-0001

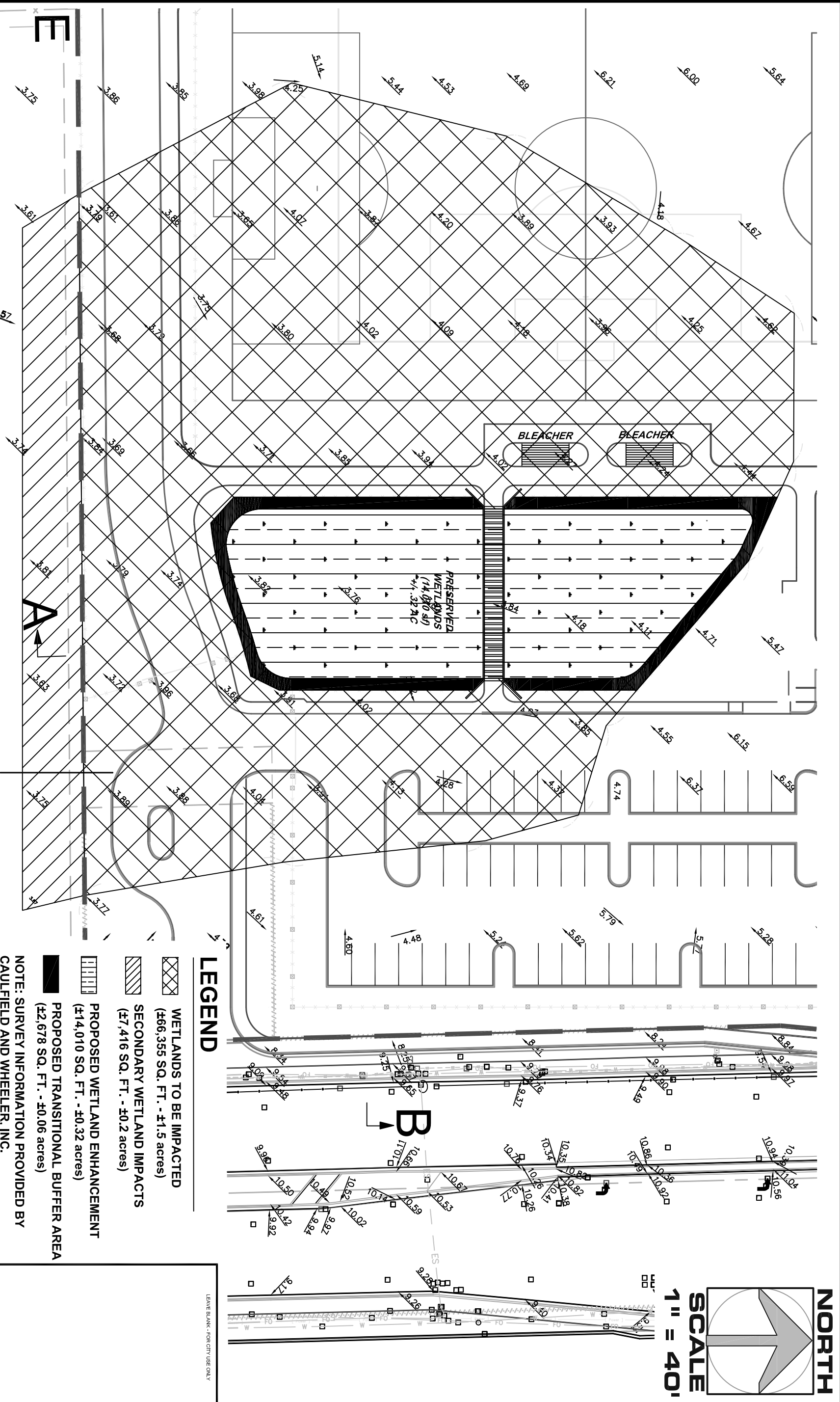
**PINE ISLAND ROAD AND 50TH STREET**  
**ATHLETIC COMPLEX**  
 PINE ISLAND ROAD  
 SUNRISE, FL  
 PREPARED FOR: CITY OF SUNRISE, FLORIDA

**THE Chappell GROUP**

7114 East Minkoff Road  
 Pompano Beach, Florida 33060  
 TEL: 352-782-1108 FAX: 352-782-1108  
 WWW.THECHAPPELLGROUP.COM

- Environmental Consultants
- Marine & Wetland Permitting
- Mitigation Design & Monitoring
- TSE Species Surveys
- Phase I ESAs

SEAL:	DATE:
	7-1-2016
DRAWING NO.:	
PROJECT #:	15-0043
	2 of 5



**NORTH**  
  
**SCALE**  
 1" = 40'

**LEGEND**

- WETLANDS TO BE IMPACTED  
(#66,355 SQ. FT. - #1.5 acres)
  - SECONDARY WETLAND IMPACTS  
(#7,416 SQ. FT. - #0.2 acres)
  - PROPOSED WETLAND ENHANCEMENT  
(#14,010 SQ. FT. - #0.32 acres)
  - PROPOSED TRANSITIONAL BUFFER AREA  
(#2,678 SQ. FT. - #0.06 acres)
- NOTE: SURVEY INFORMATION PROVIDED BY CAULFIELD AND WHEELER, INC.

LEAVE BLANK - FOR CITY USE ONLY

DATE:	
SCALE:	
DESIGNED BY:	D/S
DRAWN BY:	D/S
CHECKED BY:	D/S
APPROVED BY:	JBH

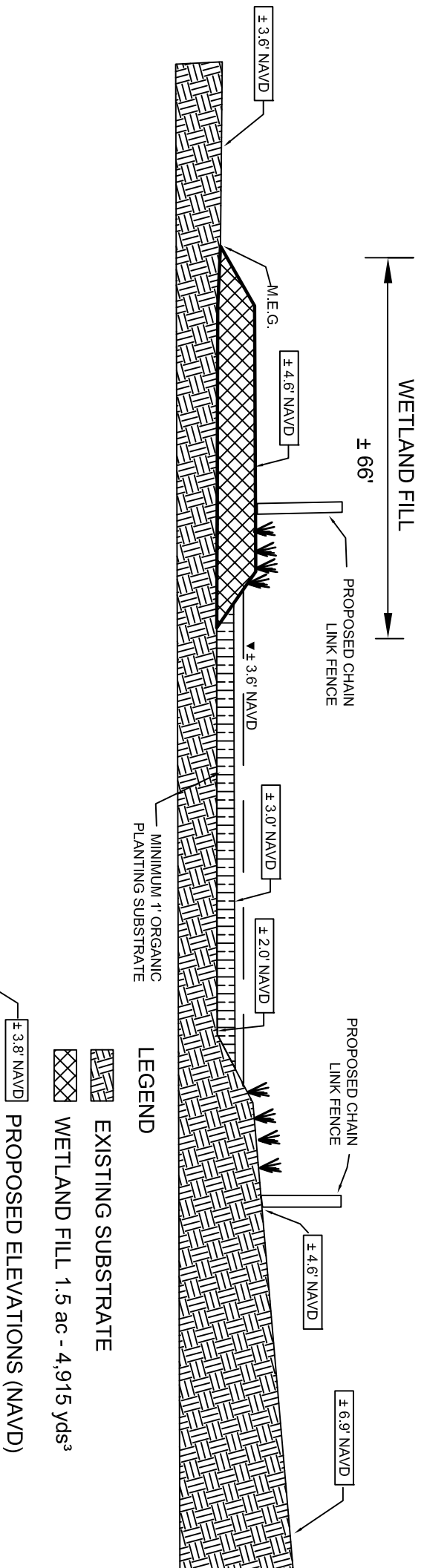
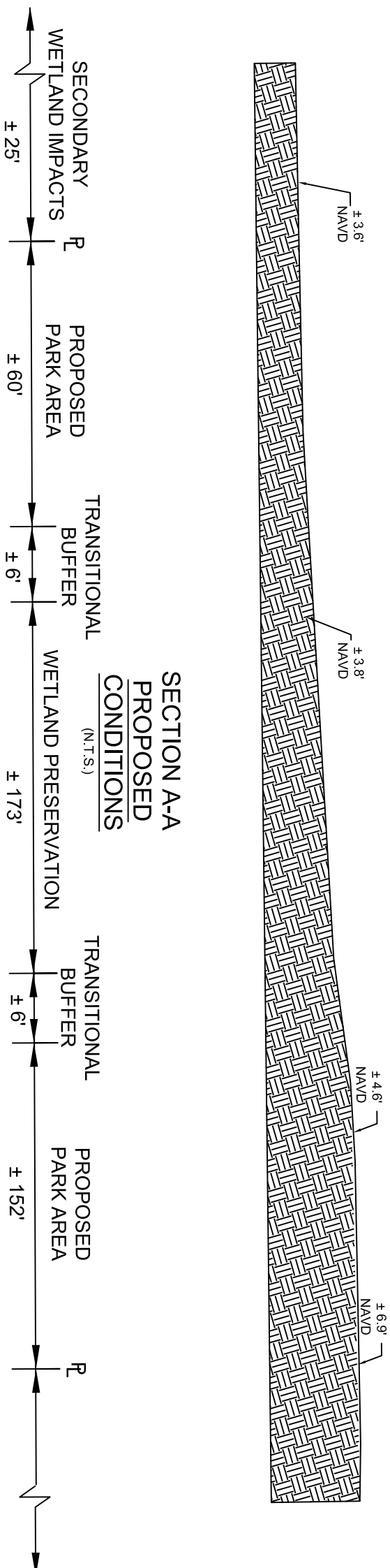
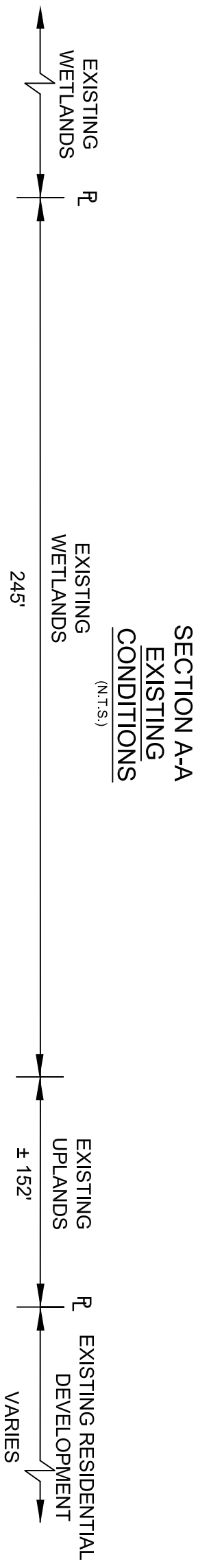
**Craven Thompson and Associates, Inc.**  
 ENGINEERS • PLANNERS • SURVEYORS  
 3004 N. COOK STREET, PORT LINDEN, FLORIDA 33056  
 PHONE: (904) 399-9900  
 FAX: (904) 399-9901  
 WWW.CRAVEN-THOMPSON.COM

**PINE ISLAND ROAD AND 50TH STREET  
 ATHLETIC COMPLEX**  
 PINE ISLAND ROAD  
 SUNRISE, FL  
 PREPARED FOR: CITY OF SUNRISE, FLORIDA

**THE Chappell GROUP**  
 714 East Minkler Road  
 Fort Lauderdale, FL 33309  
 Tel: 954.782.1108  
 Fax: 954.782.1108  
 www.thechappellgroup.com

- Environmental Consultants
- Marine & Wetland Permitting
- Mitigation Design & Monitoring
- TCE Services / Surveys
- Phase I / ESAs

DATE:	7-1-2016
DRAWING NO.:	3 of 5
PROJECT #:	15-0043



- LEGEND**
- EXISTING SUBSTRATE
  - WETLAND FILL 1.5 ac - 4,915 yds<sup>3</sup>
  - PROPOSED ELEVATIONS (NAVD)

DATE:	
SCALE:	
DESIGNED BY:	DJS
DRAWN BY:	DJS
CHECKED BY:	DJS
APPROVED BY:	JDH

GRAVEN THOMPSON AND ASSOCIATES, INC.  
ENGINEERS - PLANNERS - SURVEYORS  
3000 W. 73rd Ave. Fort Lauderdale, FL 33309  
Phone: (954) 782-4444  
www.graven.com

**PINE ISLAND ROAD AND 50TH STREET  
ATHLETIC COMPLEX**  
PINE ISLAND ROAD  
SUNRISE, FL  
PREPARED FOR: CITY OF SUNRISE, FLORIDA

**THE Chappell GROUP**  
7141 Ford Motor Road  
Pompano Beach, Florida 33060  
Tel: 954-782-1009  
Fax: 954-782-1108  
www.thechappellgroup.com

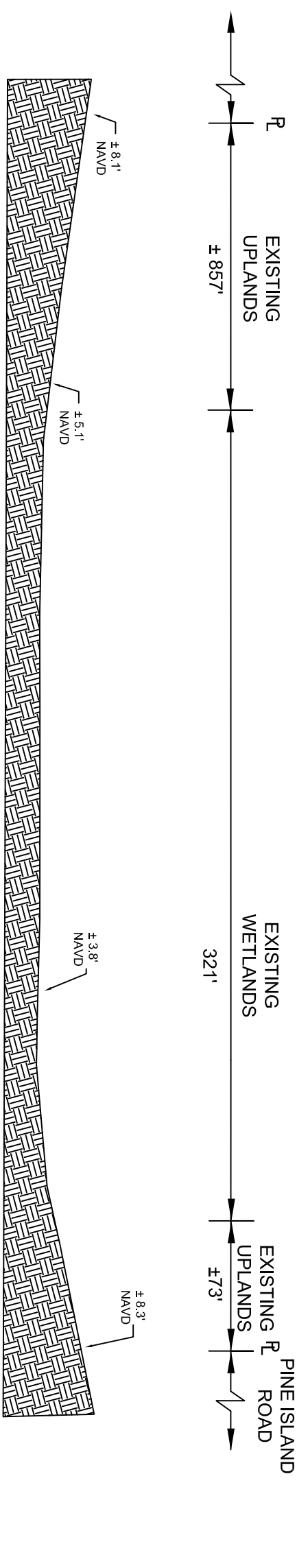
- Environmental Consultants
- Marine & Wetland Permitting
- Mitigation Design & Monitoring
- TSE Species Surveys
- Phase I ESAs

SEAL	DATE:
Douglas James Smith	7-1-2016
Florida B.L.A. No. LA 668837	DRAWING NO.
PROJECT #:	4 of 5
15-0043	

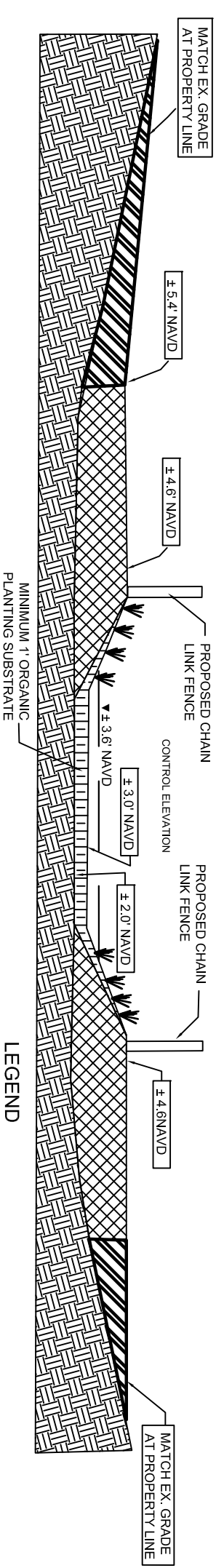
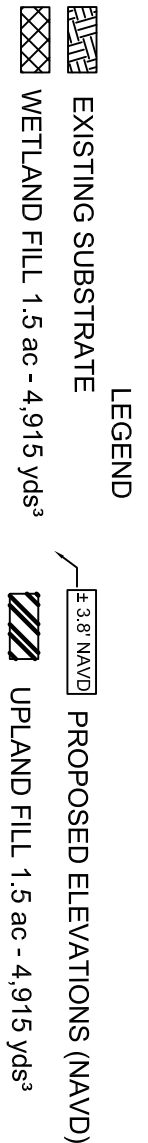
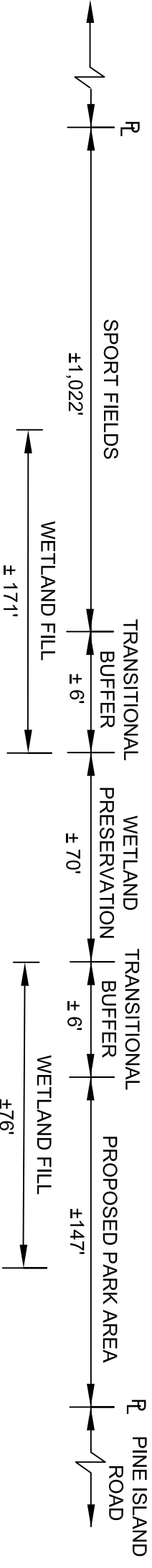
LEAVE BLANK - FOR CITY USE ONLY



SECTION B-B  
EXISTING CONDITIONS  
(N.T.S.)



SECTION B-B  
PROPOSED CONDITIONS  
(N.T.S.)



DATE:	
SCALE:	
DESIGNED BY:	DJS
DRAWN BY:	DJS
CHECKED BY:	DJS
APPROVED BY:	JDH

GRAVEN THOMPSON AND ASSOCIATES, INC.  
ENGINEERS ARCHITECTS PLANNERS  
10000 W. BOYD BLVD., SUITE 100  
FORT LAUDERDALE, FLORIDA 33309  
TEL: 954.376.1100 FAX: 954.376.1101  
WWW.GRAVEN-THOMPSON.COM

PINE ISLAND ROAD AND 50TH STREET  
ATHLETIC COMPLEX  
PINE ISLAND ROAD  
SUNRISE, FL  
PREPARED FOR: CITY OF SUNRISE, FLORIDA

THE CHAPPELL GROUP  
714 East Nichol Road  
Fort Lauderdale, Florida 33309  
Tel: 954.782.1908 Fax: 954.782.1109  
www.thechappellgroup.com

- Environmental Consultants
- Marina & Wetland Permitting
- Mitigation Design & Monitoring
- TSE Species Surveys
- Phase I ESAs

DATE:	7-1-2016
DRAWING NO.:	5 of 5
PROJECT #:	15-0043

LEAVE BLANK - FOR CITY USE ONLY